

# Beverford District Primary School Newsletter

20 School Road  
Beverford 3590  
Ph. 50376622  
email: beverford.ps@edumail.vic.gov.au



May 7, 2019

Term 2, Week 3

## What's On at BDPS?

### Calendar: Term 2, 2019

Thursday May 9	<b>Mother's Day Breakfast (8.15 - 9.15)</b> Mackillop College Transition Day (Gr. 6)
Monday May 13	Book Club Orders Due
Tues May 14 – Thur May 16	<b>Grade 3 &amp; 5 NAPLAN Testing</b>
Wednesday May 15	School Council Meeting 7pm
Thursday May 16	Book Fair begins
Tuesday May 21	Divisional Cross Country
Thursday May 23	Swan Hill College Transition Day (Gr 6)
Thursday May 30	Woolworths Fresh Fruit Excursion
Monday June 3	Bike Education Container Arrives
Thursday June 6	District Winter Sports
Friday June 7	Beverford Tavern Raffle
<b>Monday June 10</b>	<b>Queen's Birthday Public Holiday</b>
Tuesday June 11	Whole School OHS Audit Day
Friday June 14	<b>Proposed Pupil Free Day</b>
Tuesday June 18	Responsible Pet Ownership Workshops
Friday June 21	Zone Winter Sports
Friday June 28	Term 2 Ends

*Lunch orders available this Friday!*

*Maths Mate No. 2 & Homework due Friday*



## OFF AND RACING

Congratulations to Billy Matthews, Ben Van Liessum and Breannah Burney who have qualified for the Mallee Divisional Cross Country at Riverside Park on May 21.

This is a fantastic achievement and a great reward for effort. These students will continue to practice using the school course.



# Principal's Report

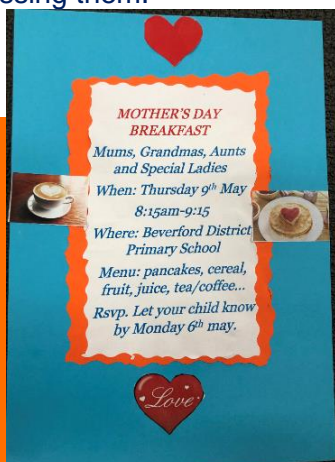
## Cross Country Success!

Congratulations to all of the students who competed in the Swan Hill District School's Cross Country event at Riverside Park on Monday. It was great to see the improvement the students displayed in their running throughout the practice sessions and then in the actual event. We congratulate Billy Matthews, Ben Van Liessum and Breannah Burney who have qualified to compete in the Mallee Zone Divisional Cross Country in Swan Hill on May 21.

This Thursday May 9 students have invited mums, grandmother's, aunts and any significant ladies in the student's lives to a special breakfast at the school. This will run between 8.15am and 9.15am in the hope that visitors will be able to drop in before work or their day begins. It will be a great way to acknowledge the amazing job our mums and grandmothers do. Students will be busy organising the event with Miss Fairley and Miss Washbrook in the lead up.

NAPLAN testing for students in Grade 3 and 5 will be conducted next week on Tuesday May 14, Wednesday May 15 and Thursday May 16. Students will undertake a Reading, Language Conventions, Writing and Numeracy test over the three days. A note with further information was sent home with all students in Grade 3 and 5 last week. If you have any concerns about your child undertaking the testing, please contact me at the school this week.

Next Wednesday May 15 we have a School Council Meeting at 7pm. A reminder to councilors to read over the policies that were sent home in the first week of term, any problems with the policies need to be made known before the meeting, to ensure time is not wasted discussing them.



The Earn & Learn program has begun at Woolworths and continues till June 25. Please fill out your sticker pages or place them into the box at Woolworths or at school. More sticker pages are available at school.

This week we congratulate the following students on their awards.

### Junior Student of the Week

Phoenix Moloney – for always attacking his work with enthusiasm and doing his best.

### Senior Student of the Week

Liam Shadbolt – for showing great interest and dedication into his project work.

### Principal Award

Tarleysha Ewart – for having a positive attitude towards all aspects of her schooling.

Enjoy your Week,  
Thanks, Phil



Principal Award Winner – Tarley Ewart



*Meg and Emma during the 8 year old Cross Country.*



*Students of the Week: Phoenix & Liam.*



*Darcy, Tai and Aidan getting ready to run.*



*Home Reading Award Winners – Quordel, Meg & Oscar.*



*Jackson striding out in his race.*



*Ben finishing his very tight race.*